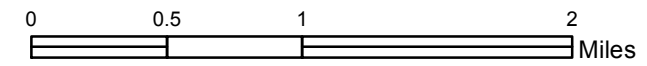
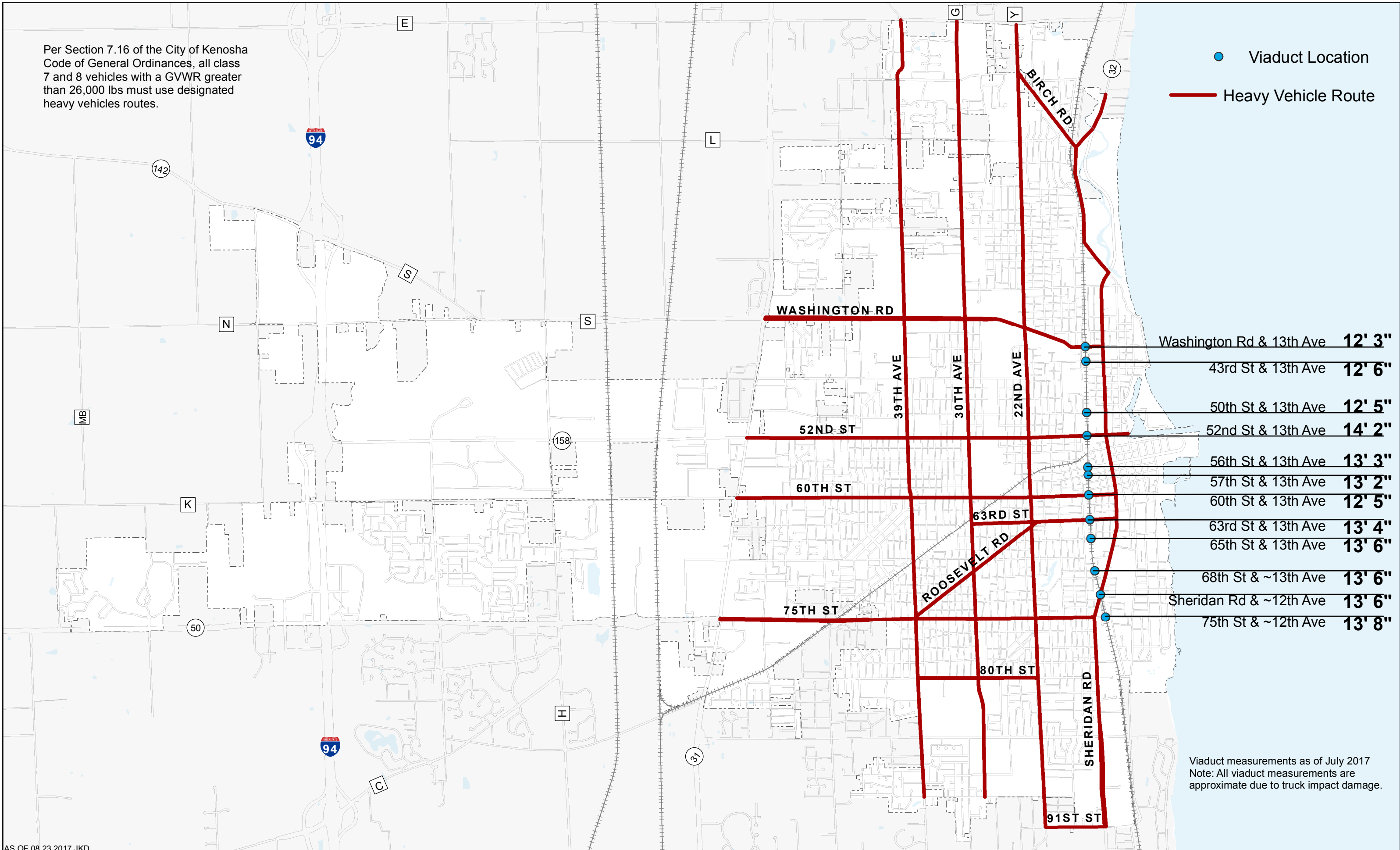


Heavy Vehicle Routes & Viaduct Locations



Per Section 7.16 of the City of Kenosha Code of General Ordinances, all class 7 and 8 vehicles with a GVWR greater than 26,000 lbs must use designated heavy vehicles routes.

- Viaduct Location
- Heavy Vehicle Route



Washington Rd & 13th Ave	12' 3"
43rd St & 13th Ave	12' 6"
50th St & 13th Ave	12' 5"
52nd St & 13th Ave	14' 2"
56th St & 13th Ave	13' 3"
57th St & 13th Ave	13' 2"
60th St & 13th Ave	12' 5"
63rd St & 13th Ave	13' 4"
65th St & 13th Ave	13' 6"
68th St & ~13th Ave	13' 6"
Sheridan Rd & ~12th Ave	13' 6"
75th St & ~12th Ave	13' 8"

Viaduct measurements as of July 2017
 Note: All viaduct measurements are approximate due to truck impact damage.