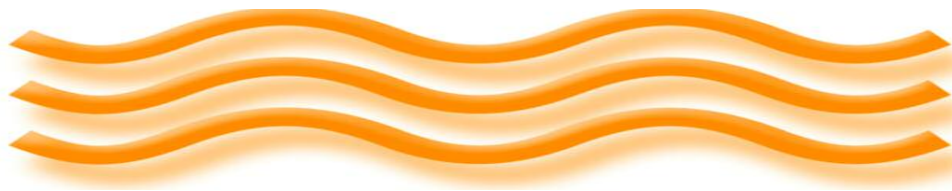


# EDUCATIONAL PROGRAMS AND SERVICES GUIDE



# TABLE OF CONTENTS

General Information ..... 1

Welcome Teachers ..... 2

Educational Programs ..... 3-7

Kenosha Public Museum ..... 3-4

Dinosaur Discovery Museum ..... 5

Civil War Museum ..... 6-7

Plan Your Visit ..... 8-9

Just For Teachers ..... Back Cover

## NEW THIS YEAR...

- ◆ Online Registration
- ◆ New dinosaurs at the Dinosaur Discovery Museum
- ◆ Design-Your-Own Tours at the Civil War Museum
- ◆ Civil War Museum Theatre Programs



in association with the Smithsonian Institution

# General Information

**Groups of 10 or more need to make a reservation to visit the Kenosha Public Museums.**

Groups smaller than 10 students should call to check how busy the museum is, if we are over-capacity, and to inform the staff of your visit.

Schedule reservations at least 3 weeks prior to your visit to allow time for scheduling volunteers and classrooms. If you want a spring date, call as soon as possible. Don't wait!



## Kenosha Public Museum

5500 First Avenue  
Kenosha, WI 53140  
(262) 653-4140

[www.kenoshapublicmuseum.org](http://www.kenoshapublicmuseum.org)

*The Kenosha Public Museum is a natural science, anthropology and fine and decorative arts museum with a collection of more than 80,000 pieces from around the world and throughout time.*

*Exhibits include mammoths, world cultures, zoology, geology, fossils, as well as fine and decorative arts.*

### HOURS:

Tuesday through Saturday 9 a.m. to 5 p.m.,  
Sunday & Monday 12 to 5 p.m., Closed Holidays

### GROUP RESERVATIONS:

Tuesday through Saturday  
between 9:30 a.m. and 4 p.m.  
Sunday and Monday afternoons  
between 12:30 and 4 p.m.

## Dinosaur Discovery Museum

5608 Tenth Avenue  
Kenosha, WI 53140  
(262) 653-4450

[www.dinosaurdiscoverymuseum.org](http://www.dinosaurdiscoverymuseum.org)

*The Dinosaur Discovery Museum features the nation's largest display of meat-eating theropods and focuses on the development and change over time of theropods into modern birds.*

*It is also home to the Carthage Institute of Paleontology located on the lower level of the Museum. The Institute collects and studies dinosaur specimens which are stored at the Museum and on display for visitors.*

### HOURS:

Tuesday through Sunday 12 to 5 p.m.,  
Closed Mondays & Holidays

### GROUP RESERVATIONS:

Group visits are by appointment only  
Tuesday at 10:45 a.m.,  
Wednesday through Friday mornings  
9:30 a.m. or 10:45 a.m.

## Civil War Museum

5400 First Avenue  
Kenosha, WI 53140  
(262) 653-4141

[www.thecivilwarmuseum.org](http://www.thecivilwarmuseum.org)

*The Civil War Museum focuses on the role of six Midwestern states: Wisconsin, Minnesota, Iowa, Illinois, Indiana, and Michigan and tells the personal stories of the men, women and children before, during and after the Civil War.*

*The Museum collects, preserves and interprets artifacts relating to the social, economic and cultural experiences of the people of the Upper Middle West as affected by the Civil War.*

### HOURS:

Tuesday through Saturday 9 a.m. to 5 p.m.,  
Sunday & Monday 12 to 5 p.m., Closed Holidays

### GROUP RESERVATIONS:

Tuesday through Saturday  
between 9:30 a.m. and 4 p.m.  
Sunday and Monday afternoons  
between 12:30 and 4 p.m.



# Welcome Teachers!

Fall 2009

Dear Educator,

Welcome to another school year! The Kenosha Public Museums are geared up to help you bring the Museums' exhibits and collections alive for your students through a variety of standards-based educational programs and activities. It



is the mission of the Education Department to educate its diverse audiences to awaken curiosity, to inspire, and to develop appreciation for the Earth, its resources, its people and their creations. We strive to accomplish this with interactive, skill-building programs.

These programs are offered throughout the school year so DON'T WAIT until spring to visit the Museums! Fall and winter are great times to visit when the Museums are less crowded and program times more available. Whenever you choose to visit the Kenosha Public Museum, the Dinosaur Discovery Museum and/or the Civil War Museum, we look forward to providing your students a high-quality educational (and fun!) experience.

Nancy Mathews

Senior Curator of Education



*For group reservations, contact the Education Services Coordinator at 262-653-4433 or visit [www.kenoshapublicmuseum.org](http://www.kenoshapublicmuseum.org)*

# Kenosha Public Museum

## GUIDED TOUR

### Museum Favorites

2nd Grade-Adult (30-60 minutes)

Get a taste of the Museum's more than 80,000 objects representing cultures and environments from around the world and throughout time. Learn about some of these fascinating artifacts, works of art, and specimens on a guided tour through the exhibits.



## Field Station

Preschool-3rd Grade (30 minutes)

Groups can reserve the Field Station for 30 minutes Tuesday through Friday mornings. The Field Station is the Museum's hands-on discovery room. Adults and students explore the drawers and activities together.



## GROUP EDUCATIONAL PROGRAMS

### Fur, Feathers & Scales

Preschool-1st Grade (45 minutes)

Learn about animals and their body coverings. Find out which animals have fur, feathers, or scales. Make a pair of "binoculars" and explore the Museum's exhibits to look for animal body coverings.

*Wisconsin Science Standards C.4.5, F.4.1, F.4.3, F.4.4*

*Illinois Science Standards 12.A.1a, 12.A.1b, 12.B.1a*



### Fossils

2nd, 5th grades-Adults (60 minutes)

What is a fossil? How are fossils formed? What can fossils tell us about plants and animals that lived in the past? Explore the answers to these questions through hands-on activities and a tour of the exhibits.

*Wisconsin Science Standards A.4.2, A.4.3, A.4.5, C.4.2, C.4.5, E.4.6*

*Illinois Science Standards 12.A.1b, 12.B.1a*

### Digging Mammoths

3rd Grade-Adult (60 minutes)

Learn about archaeology and how archaeologists discover prehistory buried in the ground. Find out how archaeologists excavated the Schaefer mammoth and what was learned from the unearthed bones and artifacts.

Students begin the program in the classroom and then visit the exhibit.

*Wisconsin Science Standards A.4.3, A.4.5, G.4.1; Social Studies B.4.1, B.4.4, B.4.10*

*Illinois Science Standards 13.A.1c, 13.B.1a, 13.A.2c, 13.B.2a; Social Studies, 16.A.1a, 16.E.1(US)*



### People of the Woodlands

3rd Grade-Adult (60 minutes)

Meet the Potawatomi who lived in Southeast Wisconsin in 1830. Learn how they used plants and animals for food, clothing, and shelter. Compare how their way of life differed from season to season. Program includes hands-on activity in the classroom and a tour of the exhibit.

*Wisconsin Social Studies Standards 4th grade, B.4.1, B.4.4, B.4.10,*

*Illinois Social Studies, 16.A.1c, 16.C.1a (US), 16.C.1b, 16.E.2a, 15.c.1b,*

*15.D.1a, 15.D.2a, 15.D.1b, 16.E.1(US)*



### Lake Michigan: Our Source of Water

5th Grade (90 minutes)

*Offered September, October, April, and May*

Explore our Great Lake Lake Michigan. Learn about its ecosystem, water quality, and how scientists study the Lake. Learn about water conservation and keeping Lake Michigan clean.

*Wisconsin Science Standards A.4.3, A.4.5, C.4.2, C.4.4, C.4.5,*

*D.4.3, D.4.5, E.4.3, F.4.4, H.4.2*

*Illinois Science Standards 12.B.2a, 12.B.2a*



# Kenosha Public Museum

## MUSEUM RESOURCE MATERIALS



## TOUR OPTIONS

### ◆ GUIDED TOUR

Led by volunteers or Museum staff.



### ◆ SELF-GUIDED

Group leaders guide their groups through the exhibits at their own pace, while using their own materials.

- ◆ **SELF-DIRECTED** Group leaders guide their groups through the exhibits at their own pace, while using Museum-developed materials.



### Look & Find Activity

Preschool-Kindergarten

This activity packet contains laminated shape and color cards with suggested activities. The activities help younger visitors develop observation skills by looking for different shapes and colors in the exhibits.

### Chaperone Routes

2nd-5th Grades

These helpful sheets direct a group of students and their chaperone throughout the Museum. Recommended for large groups. Available in English and Spanish.

### People Of The Woodlands Self-Directed Tour

3rd Grade

This worksheet guides students and chaperones through the Potawatomi Four Seasons Village exhibit. Available in both English and Spanish.

### What Is It? Scavenger Hunt

Preschool-Adult

The *What Is It?* scavenger hunt takes your group through the exhibits on both floors. The hunt features pictures of parts or patterns of an object. Your group tries to find out what the whole object is. A great test of your students' observation skills!



# Dinosaur Discovery Museum

Due to limited space, DDM group programs and guided tours require a minimum of 15 students and a maximum of 30 students. Tours and programs are by appointment only – Tuesday at 10:45 a.m., Wednesday through Friday at 9:30 a.m. or 10:45 a.m.



## GUIDED TOUR: Museum Highlight Tour

**Kindergarten-Adult (45-60 minutes)**  
Museum staff or volunteers escort your group on a guided tour through the Dinosaur Discovery Museum's exhibit gallery. The tour also includes a discussion of the Carthage College Paleontology Lab on the lower level of the Museum. Find out what dinosaurs are, when they lived, and how paleontologists know they existed. Learn about the fascinating meat-eating dinosaurs, theropods, and how they changed over time to become avian dinosaurs— modern birds. The tour is adapted to the group's age-level, and includes an age-appropriate activity, if time permits.

## GROUP EDUCATIONAL PROGRAMS

### Dino Tots

**Preschool 3-5 years old (30 minutes)**

"Dino Tots" is a tour created specifically for preschoolers to give them a simplified introduction to dinosaurs. They learn what dinosaurs were, how we know they existed, what they ate, and how big or small they were. Touch real fossils, see replica dinosaur teeth and measure the length of dinosaurs. The tour ends with a simple craft activity.

### What Is A Dinosaur?

**Kindergarten (45 minutes)**

Learn all about dinosaurs. What is a dinosaur? How do we know dinosaurs existed? What did they eat? Are there animals that exist today that are relatives of dinosaurs? Includes hands-on classroom activities and a tour of the exhibit gallery.

*Wisconsin Science Standards: A4.3, 4.5, B4.2, 4.3, C4.2, 4.3,4.5, 4.8, D4.1, F4.2, 4.3*

*Illinois Science Standards: 11.A.1c, 1e,12.A.1a,12.B.1a,13.A.1b, 1c*

### Discovering Dinosaurs

**2nd Grade (45-60 minutes)**

Explore the science of paleontology. Discover how paleontologists work together to find and study dinosaur fossil bones. Learn about their tools and methods of discovery. Learn about the dinosaur's closest living relatives—modern birds. This program includes a discussion of the Carthage College Paleontology Lab on the Museum's lower level and tour of the Dinosaur Discovery Museum exhibit gallery.

*Wisconsin Science Standards: A4.2, 4.3, 4.5, B4.2, 4.3, C4.2, 4.5, E4.6, F4.2, 4.3, 4.4*

*Illinois Science Standards: 11.A.1e, 1f, 12.B.1a, 13A.1b, 1c*



### SELF-DIRECTED TOUR: Backpack Through The Mesozoic

**Kindergarten-Adult (45-60 minutes)**

This self-directed tour is for small groups to enjoy a wonderful educational experience at the Museum on their own. The tour features a scripted dialog with questions and answers for the designated tour guide to read, along with a backpack full of activities and props to engage the group.

All materials and instructions provide an overview of the exhibit gallery and the Carthage College Paleontology Lab in the Museum's lower level.

*Available from 12-5 p.m. only  
15 people maximum*

# Civil War Museum

## Design Your Own Tour

7th grade and up  
Max. 90 people  
Min. 60 people,  
10 students per 1 chaperone ratio  
Time length maximum:  
2 hours with 10 min. orientation



Design your own worksheet or activity for your Civil War Museum visit! When scheduling your visit, please collaborate with the Curator of Education to create an exceptional learning visit. We can help by suggesting aspects that have worked for self-guided students. The Museum provides clip-boards and pencils; no pens are allowed. Make sure you ask about enhancing your learning experience by adding a Theatre Program to your activities. Call Brett Lobello at 262-653-4423 for more information.



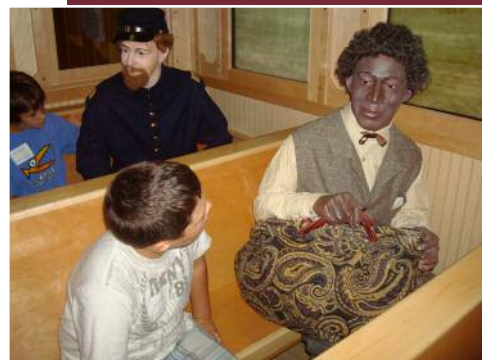
## GROUP EDUCATIONAL PROGRAMS

### King Cotton and the Underground Railroad

4th and 5th grades (1½ hours)  
Max. 30 people, Min. 15 people

This classroom-based program allows students to examine the roots of the Civil War with particular attention to a slave's life and their means of escape. Students learn about slavery and the Southern economy in general in this interactive program. Make sure you ask about enhancing your learning experience by adding a Theatre Program to your activities.

*Wisconsin English Language Arts Performance Standards C.4.1, C.4.2, C.4.3, C.8.1, C.8.2, C.8.3; Social Studies Performance Standards B.4.1, B.4.5, B.8.10*  
*Illinois English Language Arts Goals 4.A.3a, 4.B.3a; Social Science Goals 14.F.2, 16.C.2a, 16.D.2b*



### The Midwest in the Civil War

8th and 9th grades (2 hours)

Max. 60 people, Min. 15 people

Using the exhibit, "The Fiery Trial" as the classroom, students see what Midwesterners thought were the causes of the Civil War, what motivated different groups to enlist in the army, and how the Civil War affected the Midwest. The structure of the tour contains both guided and self-exploration elements. This program includes a primary source classroom activity and "Fiery Trial" worksheet. Make sure you ask about enhancing your learning experience by adding a Theatre Program to your activities.



*Wisconsin English Language Arts Performance Standards C.8.1, C.8.2, C.8.3*  
*Social Studies Performance Standards B.8.1, B.8.2, B.8.4*  
*Illinois English Language Arts Goals 4.A.3a, 4.B.3a, 16.B.3a, 16.C.3b, 16.D.4a, 17.C.3a*



b

For group reservations, contact the Education Services Coordinator at 262-653-4433 or visit [www.kenoshapublicmuseum.org](http://www.kenoshapublicmuseum.org)

# Civil War Museum

## THEATRE PROGRAM

History comes alive when students interact with professional actors portraying historical figures. These characters create memorable experiences for students by showing them how the Civil War affected everyday people. Make sure you ask about enhancing your learning experience by adding a Theatre Program to your activities.

Max. 125 people – Min. 45 people  
50 minutes (30 minute performance with  
20 minutes for intro and Q and A.)

Audience: 4th-12th grade

*The Civil War Museum Theatre Program is funded in part by a grant from the Wisconsin Humanities Council, with funds from the National Endowment for the Humanities and the State of Wisconsin. Any views, findings, conclusions or recommendations expressed in this project do not necessarily represent those of the National Endowment for the Humanities.*

### Cordelia Harvey – The Wisconsin Angel

(1824-1895), Wisconsin's Representative in the Western Sanitary Commission

During the Civil War, Cordelia Harvey was known as the "Wisconsin Angel" because of the support she gave wounded and sick soldiers. Through perseverance and determination, she was able to convince President Lincoln to establish hospitals in the North when he was initially opposed to the idea.

Wisconsin History Performance Standards B.4.3, B.4.7, B.8.2, B.8.4  
Illinois Social Science Goals 16.B.2c, 16.D.2c, 16.A.3a, 16.B.3d



### Ida B. Wells-Child of the Civil War

(1862-1931),

Early Civil Rights leader who migrated to Chicago

What did the Civil War mean to African

Americans? Was it freedom? Were they disillusioned with what freedom was?

Ida B. Wells brings these important questions to the surface. This presentation is recommended for 8th grade and above.

Wisconsin History Performance Standards B.12.4, B.12.13, B.12.15, B.12.18

Illinois Social Science Goals 16.D.4a, 16.D.4b, 16.D.5



### William Herndon – The Man Who Knew Lincoln

(1818-1891), Abraham Lincoln's Law Partner before the Civil War

Meet William Herndon as he reminisces about gathering stories from Abraham Lincoln's childhood for a biography he plans to write. Through Mr. Herndon, students hear many stories about a young Abraham Lincoln.

Wisconsin History Performance Standards: B.4.3, B.4.7, B.8.2, B.8.4  
Illinois Social Science Goals: 16.D.4a, 16.D.4b, 16.D.5

### Caroline Quarlls – My Independence Day

(1826-189?), Escaped slave traveling through Wisconsin and Illinois

Learn about Caroline Quarlls' escape out of slavery. Hear her story about why she ran away, how she escaped, and how she gradually started to exercise her new-found freedoms.

Wisconsin History Performance Standards: B.4.4, B.4.7, B.8.4, B.8.6,  
Illinois Social Science Goals: 16.A.2b, 16.C.2c, 16.D.3a, 16.D.4a, 16.d.4



### CIVIL WAR MUSEUM THEATRE OUTREACH PROGRAM

*Great for In-School Assemblies!*

HAVE ONE OF OUR ACTORS VISIT YOUR SCHOOL!

Students can have the same great learning experience in the comfort of their own school.

Please call at least one month in advance to check actor availability.

# Planning Your Visit



## PAYMENT

Payment is due two weeks prior to your scheduled visit. We accept Visa, MasterCard, and Discover (over-the-phone payment), cash, or checks payable to the Kenosha Public Museums. Any group that books two or more days is required to pay a non-refundable 50% down payment in order to guarantee the reservation. School groups not pre-registered will be invoiced for group fees.

## CONFIRMATION

You will be e-mailed, faxed, or mailed a confirmation letter within two weeks. Please carefully review your confirmation letter and contact KPM immediately to make changes. Make sure you receive a group confirmation invoice/schedule/pre-visit packet from the Museums two weeks after booking your trip. Call (262) 653-4433 if you did not receive a confirmation packet.

## CHANGES, CANCELLATIONS & REFUNDS

Please call as soon as possible at 262-653-4140 if your group is running late or if you need to cancel. Volunteers and staff are giving their time to greet, orient, and provide programs and tours for your group. **If your group arrives late by 20 minutes or more, programs and tours cannot be guaranteed due to time restrictions.** Check road construction and travel times before departing. Refunds for canceling an entire visit will be given only with a 72-hour notice.

## ARRIVAL CHECK-IN

**Group leaders are required to check in 15 minutes prior to the start of the program or tour time.** Do not unload students until you are directed to do so by Museum staff. This will ensure your group's prompt start time and will help guarantee the best educational experience. If your group runs late, the program/tour will be shortened by that amount of time. Please make sure you allow ample travel time to the Museums.

# F4

## LUNCH

Limited lunch space is available **BY RESERVATION ONLY** on Wednesdays, Thursdays, and Fridays for eating your brown-bag lunches. When you schedule your visit, ask about lunch space availability at the Kenosha Public Museum or Civil War Museum. The Museum's vending room offers a variety of snacks and beverages.



## RIDE THE STREETCAR



Kenosha's electric streetcar stops at all three Museums during a scenic ride along the Kenosha harbor. Please make arrangements through the Museum when reserving tours and programs.



## GIFT SHOPS

The Kenosha Public Museums have wonderful gift shops with a wide selection of souvenirs, toys, educational items, and books. Students may visit the shops in groups of 8 or less and must be accompanied by chaperones.

# Say Goodbye to Telephone Tag!

## WANT TO BOOK A FIELD TRIP? TRY OUR NEW ONLINE RESERVATION REQUEST WORKSHEET



To better serve you, we have created an online reservation request worksheet to begin the field trip reservation process.

**Visit [www.kenoshapublicmuseum.org](http://www.kenoshapublicmuseum.org) and go to "Group Tours and Teacher Resources" to get started.**

After you fill out and submit the worksheet, we will then check your requested date for availability. If the date is available, we will schedule your group and notify you via e-mail and snail mail. You will receive an invoice that guarantees your group's field trip date and program.

If your requested dates are not available, we will work with you to find a suitable date.

**DATES FILL UP QUICKLY, SO DON'T DELAY!**

It's just one more way we are working to make your Museum experience the best it can be!

# Just for Teachers

## Jack D. Michaels Resource Center

The Resource Center is a great place for students to work on Civil War research projects outside of the classroom. This non-circulating library has more than 1,000 books, many maps, hundreds of Civil War magazines, copies of primary resources from the Museum's archives, and our collection is growing every day.

Knowledgeable volunteers and staff members are available to assist your students.

The Resource Center is open Sunday through Friday, noon to 5 p.m., and Saturdays from 10 a.m. to 5 p.m.

## Educational Loan Resources

The Museum's Educational Loan Collection has more than 700 videos, DVDs, posters, maps, art reproductions, specimens, and Discovery Boxes with hands-on objects. These items may be checked out by educators, Scout leaders, and home-school teachers for two weeks FREE OF CHARGE.

A current catalog of loan resources can viewed online at [www.kenoshapublicmuseum.org](http://www.kenoshapublicmuseum.org).

Loan resources may be reserved by e-mailing your request to [kpmresources@kenosha.org](mailto:kpmresources@kenosha.org) or by calling the Education Clerk at 262-653-4140, ext. 116.



*Special thanks to the Dimensions of Learning Academy*