

Inside...

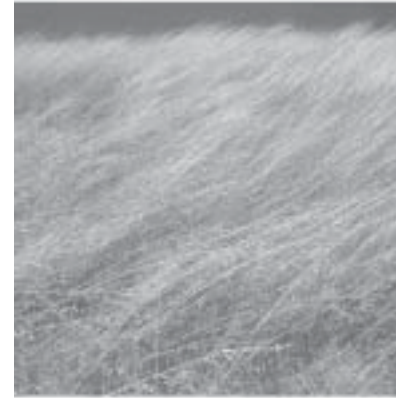
Bare Wood Drop-Off Site	11	Major Appliance Collection	7
Brush Curbside Collection	9	Needles & Sharps Disposal	13
Bulk Waste Collection	4-5	Recycling	
Bulk Waste Drop-Off Site	6	Curbside Collection	2-3
Concrete, Brick, Stone & Masonry Drop-Off Site	11	Used Oil Drop-Off Sites	12
Household Hazardous Waste Drop-Off Site	14-15	Yardwaste Curbside Collection . .	8
		Yardwaste & Brush Drop-Off Site	10

Questions? For more information, call:

City of Kenosha
Department of Public Works
653-4050

OFFICE HOURS:
8 a.m. to 4:30 p.m.
MONDAY THRU FRIDAY

Visit our website at www.kenosha.org



LET'S TALK TRASH



A and B City Recycling Routes

If Your Garbage Day is...	Your Recycling Route is A if you live...	Your Recycling Route is B if you live...
Monday	EAST of 22nd Avenue	WEST of 22nd Avenue
Tuesday	EAST of 32nd Avenue	WEST of 32nd Avenue
Wednesday	NORTH of 60th Street & EAST of 19th Avenue <i>or</i> SOUTH of 60th Street & EAST of 18th Avenue	SOUTH of 60th Street & WEST of 18th Avenue
Thursday	EAST of 60th Avenue	WEST of 60th Avenue
Friday	EAST of 26th Avenue	WEST of 26th Avenue

City of Kenosha Recycling & Waste Disposal Guide

Department of Public Works
653-4050

QUICK REFERENCE

Aerosol Cans	Place empty aerosol cans in regular garbage.
Animal Waste	Double bag animal waste in plastic bags and place in regular garbage.
Anti-Freeze	See Household Hazardous Waste, page 14 & 15.
Appliances	See Major Appliance Collection, page 7.
Ashes	Must be COLD prior to disposal. Double bag ashes using plastic bags. Place in regular garbage.
Batteries	Vehicle batteries (lead acid) are accepted at the Bulk Drop-Off Site (No Charge) Household batteries can be placed in regular garbage. Nickel-Cadmium batteries are accepted at Household Hazardous Waste Disposal Site operated by the Kenosha Water Utility.
Brick	See Concrete Recycling, page 11.
Broken Glass & Mirrors	Wrap in newspaper, double-bag, clearly mark as broken glass, and place in garbage.
Brush & Branches	See Yardwaste & Brush Collection & Drop-Off, page 8, 9 & 10.
Bulk Collection (Lg. Items)	See Bulk Waste Collection & Drop-Off, pages 4, 5 & 6.
Cans	Aluminum, tin & bi-metal cans, page 2.
Concrete	See Concrete Recycling, page 11.
Corrugated Cardboard	See Paper and Cardboard, page 3
Furniture	See Bulk Waste Collection & Drop-Off, pages 4, 5 & 6.
Glass	See Recycling, page 2.
Holiday Collection	The schedule for Holiday collection will appear in local newspapers, cable TV channel 25, and on the City Waste and Recycling Calendar.
Household Chemicals	See Household Hazardous Waste, page 14 & 15.
Light Bulbs	Wrap in newspaper or put in a plastic bag with regular garbage.
Magazines	See Paper and Cardboard, page 3.
Needle (Sharps) Disposal	See Needles and Sharps Disposal, page 13.
Newspapers	See Paper and Cardboard, page 3.
Oil	See Used Oil Recycling, page 12.
Paperboard Boxes	Flatten and place out with newspapers for recycling, see page 3.
Paint/Paint Products	See Household Hazardous Waste, page 14 & 15.
Paneling, Plywood, & Plaster Board	See Bulk Collection, pages 4 & 5 and Bulk Waste Drop-off Site, page 6.
Phone Books	Place out with newspapers for recycling, see page 3.
Plastic	Plastic containers coded 1-7 in the recycling triangle, page 2
Sawdust	Double bag sawdust in plastic bags and place in regular garbage.
Stone	See Concrete Recycling, page 11.
Tires	Call for bulk pick-up or use City drop-off site.
Waste and Recycling Calendars	Available at City of Kenosha Municipal Building, Kenosha Public Libraries, Kenosha Water Utility, Kenosha Public Museum, Kenosha Area Chamber of Commerce, Senior Citizen Center or at www.kenosha.org .
Wood	See Bare Wood Recycling, page 11; Bulk Collection, pages 4 & 5; Bulk Drop-Off Site, page 6.
Yardwaste	See Yardwaste Collection, page 8; and Drop-Off, page 10.



GENERAL GUIDELINES

- Keep garbage in trash cans or in plastic bags.
- Garbage and recyclables should not be placed at the curb more than 12 hours before your collection day.
- Remove empty cans from the curb within 12 hours of collection.
- Place containers on curb line away from trees, telephone poles or other obstacles by 6:30 a.m. on your collection day.
- Place recyclables 5 feet away from regular garbage. Do not put recycling bags in any type of container.
- Garbage/Recycling will not be collected if it is mixed together in the same bag and/or container.
- Shovel or clear area at curb during winter garbage collection.
- Place containers or bags curbside so they can be reached from the street.
- DO NOT call the Department of Public Works until after 12:30 p.m. on your collection day if you are missed.

CONTAINER REGULATIONS

- **LIMIT 7 CANS OR BAGS – 40 pound maximum per bag or can.**
- Use metal cans (**20 gallon maximum**) or plastic cans (**33 gallon maximum**) with handles or garbage bags (any color except transparent blue) for regular household waste and garbage.
- DO NOT chain or tie lids to cans. Leave covers in backyard and they will not be blown away or stolen. Public Works is NOT responsible for cans or lids that are stolen or blown away.
- Cardboard boxes, barrels or paper bags filled with trash will not be collected.
- Use **TRANSPARENT BLUE PLASTIC** recycling bags for cans, glass, and plastic (coded 1-7) recyclables.
- Use **BROWN PAPER BAGS** or **TRANSPARENT BLUE PLASTIC** recycling bags for newspapers, magazines, catalogs, mixed paper and paperboard.
- Use **CITY-APPROVED BIODEGRADABLE BAGS**, currently the BioSolo biodegradable bag, for yardwaste during spring and fall curbside collection.

mandatory

RECYCLING

Recycling is mandatory statewide. Every other week a separate truck picks up recyclables on the same day that your regular garbage is collected. The City of Kenosha is divided geographically into two recycling routes. See back cover to find out if you live within recycling route A or B.

Place brown bags and blue bags on the curb, side by side, at least 5 feet away from your regular garbage by 6:30 a.m.

Trash will not be collected if recyclables are found within garbage bags and/or cans. Recyclables will not be collected if any wrong items are found in the bag. Violations will be "tagged" with an explanation of the problem.

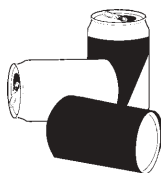
DO NOT PUT GARBAGE OR TRASH IN BROWN PAPER BAGS, BLUE RECYCLING BAGS OR CARDBOARD BOXES

CANS, GLASS & PLASTIC

Set out cans, glass, and plastics coded 1-7 in purchased transparent blue recycling bags. No bag should weigh more than 40 pounds and no other types of bags (i.e., store bags) are accepted. **DO NOT** put blue recycling bags in any type of container.

ALUMINUM, STEEL, TIN & BI-METAL CANS

- Rinse cans. Labels can remain on cans.
- **NO** foil, pie pans, scrap aluminum, pots and pans, aerosol cans, paint cans, or hangers.



PLASTIC



- Plastic containers coded 1-7 in the recycling triangle are collected for recycling. Examples include soda and water bottles, laundry soap bottles, milk and beverage jugs, butter and whipped topping tubs. Egg cartons and styrofoam are **NOT** accepted.



- Rinse containers clean and discard lids.
- **NO** plastic wrap, cooking or motor oil bottles, flower pots, store bags or containers which contained hazardous chemicals.

GLASS

- Rinse brown, green and clear glass clean. Labels can remain on.
- Windows, mirrors, light bulbs, and broken glass are not recycled.
- Wrap broken glass in newspaper, double bag it, and label "BROKEN GLASS," and place in garbage.



household hazardous waste GUIDELINES

BE AWARE!

- Read the product label and follow the use directions carefully.
- Watch out for signal words, such as **CAUTION, WARNING** or **DANGER**.
- Purchase just enough for the job.
- Look for a non-hazardous or less hazardous product to perform each job.
- Properly dispose of leftovers.
- Keep leftover products in the original container.
- Share unused products with someone who will use them properly.
- Use caution when transporting wastes to the Household Hazardous Waste Facility.
- Properly package and contain items to prevent spills and leaks.



DO NOT DUMP leftover products in the backyard or down a storm sewer or toilet.

DO NOT BURN leftover products.

DO NOT BURY leftover products.

DO NOT REUSE pesticide, herbicide, or other chemical containers for other purposes.

DO NOT MIX chemical wastes.

If you have any questions concerning household hazardous wastes, please call:

Kenosha Water Utility
653-4300 or 653-4335

HOURS: Mon. thru Fri., 8AM to 4:30PM

household hazardous waste

DROP-OFF SITE

Residential use only · No commercial disposal · No fees charged

Kenosha Water Utility

4401 Green Bay Road · 653-4300

HOURS: 8AM to 11AM, Closed Holidays

May-November - 1st & 3rd Saturdays

December-April - 1st Saturdays

Household hazardous wastes are common products found in the home. People usually store these materials for a time and eventually discard the unwanted items and their containers.

When products are used according to label directions, most are not hazardous to use. They may become hazardous if you use or store them improperly. Environmental problems can arise if you dispose of products improperly. Please **DO NOT BURN, BURY, DUMP** (in yard, toilet or down a storm sewer) or **MIX** leftover products. Chemical containers should not be reused for any other purpose. Twenty gallons **MAXIMUM**, e.g., twenty one-gallon cans or four five-gallon cans.

MATERIALS ACCEPTED

Paint Products

Lead, latex* and oil based paints, thinners, strippers, solvents, varnishes, lacquers, etc.

Auto Products

Car batteries, gasoline, brake fluid, and anti-freeze. No motor oil accepted at Household Hazardous Waste Site. See page 12.

Garden Products

Pesticides, weed killers, fertilizers, and rodent poisons, flea powder and fungicides.

Miscellaneous Items

Photographic chemicals, lighter fluids, mercury batteries, mercury thermometers, smoke detectors, thermostats, moth balls, swimming pool chemicals, wood preservatives, oven cleaners and floor cleaners.

***NOTE:** *If latex paint cans are empty or the paint is completely dry or hard in the can, it may be disposed of in regular garbage. Please remove covers from cans before placing them out for curbside collection.*

mandatory

RECYCLING

PAPER AND CARDBOARD

Place brown paper bags and bundled corrugated cardboard at the curb at least 5 feet from regular garbage by 6:30 a.m. on your scheduled collection day. **DO NOT** place brown bags or bundled corrugated cardboard in any type of container. During wet or inclement weather, insert paper recycling inside blue recycling bags or hold until the next recycling pickup.



NEWSPAPER, MAGAZINES, CATALOGS, PAPER & PAPERBOARD, PHONE BOOKS

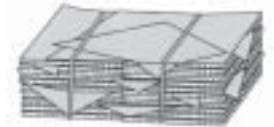
- Place in brown paper bag or tie in bundles with string.
- Empty and flatten cereal, shoe, gift, beer and soda boxes.
- Food-contaminated boxes are not recycled.

ACCEPTABLE MIXED PAPER: Magazines, flyers, telephone books, catalogs, paperback books, boxboard (unlined soda or merchandise boxes), untreated office papers (typing, printer or copy paper), file folders, index paper, stationery, junk mail, envelopes, bills, brown or white paper bags, and shredded paper.

UNACCEPTABLE MIXED PAPER: Waxed or coated papers or boxes (food containers, laminated, carbon/carbonless papers, photographs), facial or toilet tissue, heat sensitive papers, gift wrapping paper, glued papers (labels), synthetic papers (i.e., TYVEC®) and hardcover books.

CORRUGATED CARDBOARD

- Empty and flatten all boxes.
- Cut or fold large boxes no larger than 3' x 3' before bundling.
- Tie multiple boxes with rope, string or twine in bundles no larger than 6 inches in height, 40 pounds per bundle or put flattened boxes in shallow open box (1 foot in height or less).



SELF-SERVE RECYCLING DROP-OFF SITES

Residential use only · No commercial disposal · No fees charged

VEOLIA RECYCLERS

5421- 46th Street

HOURS: 6:45AM-3:15PM

Monday thru Friday

CITY OF KENOSHA DROP-OFF SITE

1001 - 50th Street

HOURS: Tues. thru Fri. 9:30AM to 5PM,

Sat. 8AM to 3:30PM, Closed Sun. & Mon. and Holidays

curbside bulk waste **COLLECTION**

**4 FREE
Curbside
Bulk Waste
Pickups**
PER YEAR
PER HOUSEHOLD

MAXIMUM:

- 5 cubic yards per collection.
- 30 bags, cans or bundles
40 pounds each.

LIMIT:

- 10 bags, cans and/or bundles
of building/demolition material.

Not sure whether an item
can be picked up for
bulk waste collection?

**CALL THE DEPARTMENT OF
PUBLIC WORKS AT 653-4050**

NOTE: Additional collections (more than four per household annually)
can be arranged for a fee. Please call 653-4050 for current charges.
You must prepay and schedule a collection date.

Bulk items may also be taken to Waste Management's Pheasant Run
Facility (fee charged) located at 19414 - 60th Street in Bristol, Wisconsin.

Residential Collection Only
No Commercial Disposal

BY APPOINTMENT ONLY

653-4050

Call at least one working day
prior to your regular
garbage collection day

One Cubic Yard Equals



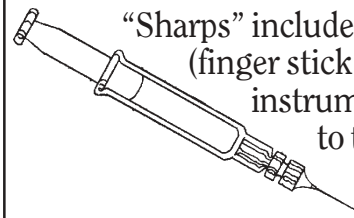
Approximately six
33-gallon bags

-OR-

the amount
of material
that fits
in a 3-foot
square box



needles and sharps holiday tree **DISPOSAL**



"Sharps" include medical needles, syringes and lancets
(finger stick devices) and other sharp medical
instruments. Wisconsin State Law makes it illegal
to throw out your used needles, syringes
and lancets with your household
garbage or recyclable materials. Unsafe
disposal can result in serious diseases through accidental needle
sticks to workers or even neighborhood children and the public.

***To dispose of needles/sharps, place them into a
red "sharps" container, then take the container
to a registered disposal site.***

***The pharmacies and medical clinic listed below
sell "sharps" containers for a small fee
and accept them for disposal.***

Pharmacies

Aurora Health Center	10400 75th Street	948-7040
Good Value	3401 80th Street	697-5744
Aurora Pharmacy	700 N. Lake Avenue Twin Lakes	877-3132

Medical Clinics

Aurora Pharmacy	7540 22nd Avenue	605-3674
-----------------	------------------	----------

HOLIDAY TREE DISPOSAL AT CITY PARKS

Holiday trees may be dropped off at various city parks during the
month of January. Trees will be chipped and used as mulch.

**Park locations are listed in the local newspaper
and broadcast on Cable TV Channel 25 in December,
or contact the Park Department at 653-4080**

- Remove tree bags and tree stands.
- Remove all lights, ornaments, nails and other metal objects.
- NO wreaths, garlands, etc. Set items out with regular garbage.
- Deposit your holiday trees inside the snow-fenced enclosures.



used oil and anti-freeze

RECYCLING SITES

Used oil and anti-freeze are hazardous substances that require special handling. They should not be put in the trash and should never be dumped down sewers or household drains. The City of Kenosha provides two free drop-off sites for used motor oil and anti-freeze.

City of Kenosha Used Oil/Anti-Freeze Drop-Off Site

1001 - 50th Street

HOURS: Tues. thru Fri. 9:30AM to 5PM,

Sat. 8AM to 3:30PM

Closed Sun. & Mon. and Holidays

Street Division Yard Drop-Off Site

6415 - 35th Avenue

OPEN 24 HOURS

USED OIL GUIDELINES

Acceptable Oils

CRANKCASE OIL	2-CYCLE OILS
HYDRAULIC OIL	DIESEL FUEL
FUEL OIL	LUBRICATING OILS
TRANSMISSION OIL	MOTOR OIL
GEAR LUBE	

- NO gasoline, cleaning solvents, cooking oils, industrial cutting oils, transformer or heat transfer oils.
- Cleaning solvents can be taken to the Household Hazardous Waste Disposal Site - see page 14 & 15.
- DO NOT recycle empty oil bottles. Put them in regular garbage.



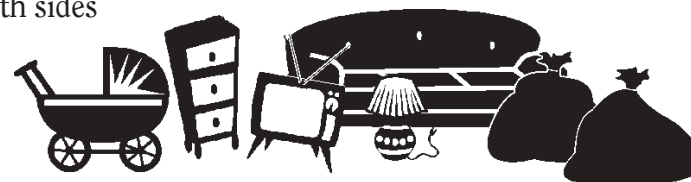
curbside bulk waste

COLLECTION

BULK WASTE GUIDELINES

Limit 40 pounds per bag, can or bundle

- Bulk items are picked up on the same day as your regular garbage. Place items at the curb the evening before or no later than 6:30 a.m. on your scheduled collection day.
- Keep items separate from your regular garbage and arrange in a safe and orderly manner.
- Keep bulk waste items away from trees, utility poles, mail boxes, traffic signs, fire hydrants and parked cars.
- During winter months, bulk items must be free of ice and snow and set out in a cleared area at the curb, (e.g., driveway approach).
- Items must fit in a truck opening of 4' x 4' and two people must be able to lift item waist high.
- Carpeting, padding and rugs must be cut or folded into 3-foot widths and rolled and tied or taped.
- Windows can be no larger than 4' x 4'. Tape an "X" with heavy duty tape across glass on both sides to prevent breakage.
- Lumber must be cut into 3-foot lengths or less and tied or taped into bundles or placed in garbage cans. Please pull out or bend over any nails.
- Paneling, plywood, drywall or plaster board must be cut into sections no larger than 4' x 4' and bundled, bagged or in garbage cans.
- NO recycling or yardwaste can be mixed in bags or cans.
- DO NOT put any items for disposal in corrugated cardboard boxes.
- NO hazardous or liquid waste. Contact the Kenosha Water Utility for disposal information at 653-4300.
- NO tank of any type (e.g., propane, oxygen, gas) is collected at the curb.
- NO concrete, stone, brick, dirt or sand is collected.
- NO pianos, organs, and/or cast iron bathtubs.



bulk waste

DROP-OFF SITE

For City of Kenosha Residents and Residential Property Owners ONLY

City of Kenosha Self-Serve Bulk Waste Drop-Off Site

1001 - 50th Street

HOURS: Tues. thru Fri. 9:30AM to 5PM,
Sat. 8AM to 3:30PM
Closed Sun. & Mon. and Holidays

PROOF OF RESIDENCY AND/OR OWNERSHIP REQUIRED

CITY RESIDENT: Current Drivers License
NON-RESIDENT
RESIDENTIAL PROPERTY OWNER:
Current Tax Bill

- A ticket must be purchased for each cubic yard of debris disposed at site. (A cubic yard is what would fit in a 3-foot square box or six 33-gallon bags.)
- Tickets can be purchased at Public Works, Harborside Mobil Gas Station (4924 Sheridan Road) or at Lenci's Deli (2121 45th Street). **No tickets can be purchased at the Drop-Off Site.**
- NO vehicle larger than a pickup truck or small trailer allowed.
- NO commercial vehicles or dumping allowed.
- THIS IS A SELF-SERVICE SITE. User(s) must off-load bulk waste on their own.
- Items for disposal must fit down a 4' x 4' chute.
- Garbage should be contained.
- NO recyclables or yardwaste can be mixed in with garbage.
- NO LOOSE MATERIALS accepted.
- NO hazardous or liquid waste. (See page 14 & 15)
- NO tanks of any kind accepted (e.g. propane, oxygen, gas, etc.)
- NO pianos, organs, camper tops, truck caps, or boats.
- NO concrete, stone, brick or masonry accepted. (See page 11)
- NO tree trunks or large branches.
- Lumber must be cut in 3-foot lengths or less and bundled or contained in garbage cans or clear plastic bags.
- Bare wood (unpainted, unvarnished and non-treated) may be disposed of FREE of charge. It is okay if there are nails in the wood. All other hardware must be removed.
- Scrap metal can be recycled FREE of charge.
- Car batteries and up to four car or small truck tires may be dropped off FREE of charge.



- * **FOR SAFETY PURPOSES - Children under 12 and pets must remain in vehicle while dumping.**
- * **No tips or gratuities allowed.**
- * **Attendant can refuse service for any rule violation.**
- * **No refunds. One ticket needed for each cubic yard.**

bare wood and concrete, brick, stone & masonry

DROP-OFF SITES

Residential use only • Proof of residency required • No fees charged

BARE WOOD DROP-OFF SITE

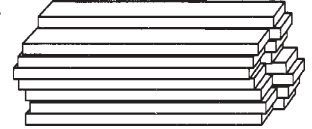
Clean, bare wood will be processed into animal bedding by a local vendor. To ensure high quality material that is safe for animals, please follow the guidelines listed below.

Bare Wood Drop-Off Site

1001 - 50th Street

HOURS: Tues. thru Fri. 9:30AM to 5PM,
Sat. 8AM to 3:30PM
Closed Sun. & Mon. and Holidays

Be prepared to climb a few steps to recycle lumber.



- Wood must be free of paint, stain and varnish. No pressure-treated wood.
- Nails only can be left in wood. Remove all other objects.
- NO brush or branches. These items will be accepted at the Yardwaste and Brush Drop-off Site, see page 10.

QUESTIONS? Ask the on-site attendant or call 653-4050

CONCRETE, BRICK, STONE & MASONRY

Street Division Yard Drop-Off Site

6415 - 35th Avenue

HOURS: Mon. thru Fri. 7AM to 3PM
Closed Saturday, Sunday and Holidays

Clean concrete, brick, stone and masonry materials will be accepted at the Street Division

Yard at no fee. This material will be processed by a local vendor and used by the City of Kenosha for street rehabilitation projects.



- NO dump trucks or vehicles larger than a pickup truck or commercial vehicles allowed.
- ONLY clean concrete, stone, brick and masonry material will be accepted.
- NO asphalt or plaster allowed.
- Stop in Street Division Office before dumping to unload material(s) in appropriate location.
- City can refuse service for any rule violation.

Residential use only • Proof of residency required • No fees charged

Concrete, brick, stone and masonry may also be disposed of for a fee at Payne & Dolan, 5817 - 46th Street.

yard waste and brush **DROP-OFF SITE**

*City of Kenosha Residents ONLY – No commercial disposal
Proof of residency must be shown at each visit – No fees charged*

City of Kenosha Self-Serve **YARDWASTE & BRUSH DROP-OFF SITE**

4071-88th Avenue (Hwy. H)

**APRIL – NOVEMBER
Monday thru Saturday
8 a.m. to 6 p.m.**

Closed Sunday and Holidays

DECEMBER – MARCH · By Appointment Only
Call City of Kenosha Street Division at 653-4070

**Wednesdays are
Senior Citizen's/
Disabled Person's
Day at the
Yardwaste
Drop-Off Site**

*Additional staff will be
available to help
seniors, disabled
persons, or anyone
who may need
assistance unloading
yardwaste and brush.*

- Yardwaste can be taken in any clean container.
- Yardwaste must be clean and free of debris prior to disposal.
- Residents must de-bag their own yardwaste at the site if brought in bags other than city-approved biodegradable bags.
- Dumpsters will be provided for bags, wires, plastic ties or other minor debris.
- Sod is accepted if separated from dirt and other yardwaste.
- No tree stumps, food waste or garbage allowed, and holiday decorations such as wreaths and pumpkins are not accepted.
- Brush no longer needs to be bundled. Brush up to 6" diameter and 12' in length is accepted.
- There is no weight limit for either yardwaste or brush.
- Residents must unload their own items from their vehicles.
- Free compost and/or wood chips may be available at the site during normal hours of operation - dependent upon availability.

Questions?

Department of Public Works

653-4050 (8 a.m. - 4:30 p.m.)

Street Division

653-4070 (7 a.m. - 3 p.m.)



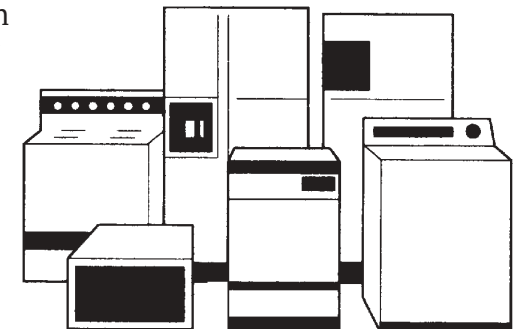
major appliance **COLLECTION**

Residential Collection By Appointment Only

Air Conditioners	Dehumidifiers	Humidifiers
Dishwashers	Boilers	Ovens
Freezers	Refrigerators	Furnaces
Hot Water Heaters	Trash Compactors	Stoves
Washers	Dryers	Microwave Ovens
Pool Heaters	Water Coolers	

**Call 653-4070 between 7AM - 3PM
or 653-4050 between 8AM - 4:30PM
to make an appointment.**

- A \$15 sticker must be purchased for each appliance. Stickers must be purchased before a pickup can be scheduled.
- Stickers are available for purchase in the Department of Public Works Office, Room 305 in the Municipal Building; at Kenosha Water Utility, 4401 Green Bay Road; or by mail. Mail your request, along with check payable to City of Kenosha and a self-addressed stamped envelope to the Department of Public Works, 625-52nd Street, Kenosha, WI 53140.
- Appliances will be scheduled for pick up on your garbage collection day. Please let us know if you need to schedule a specific week.
- If you need to reschedule for any reason, please call and cancel at least one working day before the scheduled collection.
- Doors must be removed from freezers and refrigerators for public safety reasons.
- Food must be removed from all appliances.
- Appliances must be placed curbside for collection.



curbside yardwaste **COLLECTION**

Yardwaste is banned from Wisconsin landfills.

Yardwaste includes grass clippings, leaves, weeds, tree seeds, pine cones, pine needles, garden plants and shrub trimmings.



The following ARE NOT considered yardwaste: tree nuts, floral arrangements, cemetery wreaths, food waste (including fruit and vegetable peelings), rhubarb stems and holiday decorations such as pumpkins, wreaths and cornstalks. Do not mix yardwaste with garbage or recyclables.

The best thing you can do with your yardwaste is to compost it or use it as mulch at home. Grass clippings should be left on the lawn, where they provide nutrients for your turf. Clippings and leaves also make excellent mulch in gardens and around flowers and shrubs.

Compost can be delivered for a fee or is occasionally available FREE at the City Yardwaste Drop-Off Site.

CONTACT THE STREET DIVISION AT 653-4070 FOR DETAILS.

YARDWASTE COLLECTION GUIDELINES

LIMIT: 40 pounds per bag

- Collected curbside in Spring and Fall. Exact dates are announced in the local newspapers, radio stations, and Cable TV Channel 25 and outlined in green on your waste and recycling calendar.
- Yardwaste must be in City-approved, biodegradable yardwaste bags, currently the BioSolo biodegradable bag, available from local retail stores. No other garbage bags will be accepted.
- Place yardwaste bags a few feet away from your regular waste and recycling.

curbside brush **COLLECTION**

Brush is collected curbside May through November

BY APPOINTMENT ONLY

653-4050

Call at least one working day prior to your regular garbage collection day

Brush is tree and shrub trimmings less than 6" in diameter. Lumber, wood and similar building materials ARE NOT considered brush.

The brush collection program serves property owners who maintain their own property. You may also dispose of your brush and branches at the City of Kenosha Yardwaste & Brush Drop-off Site (see next page). All material collected is chipped and recycled as mulch.

Wood chips can be delivered for a fee or are occasionally available FREE at the City Yardwaste Drop-Off Site.

CONTACT THE PARK DEPARTMENT AT 653-4080 FOR DETAILS.

BRUSH COLLECTION GUIDELINES

LIMIT: 40 pounds per bundle

- Remove all roots, stumps and dirt.
- Bundle brush in 3-foot lengths.
- Tie small amounts of brush in bundles, using ONLY string or twine (no wire, plastic or cloth bindings).
- Do not put brush in bags or cardboard boxes.
- Place brush on the parkway at the street edge away from trees, parked cars, fire hydrants, utility poles and other obstructions.